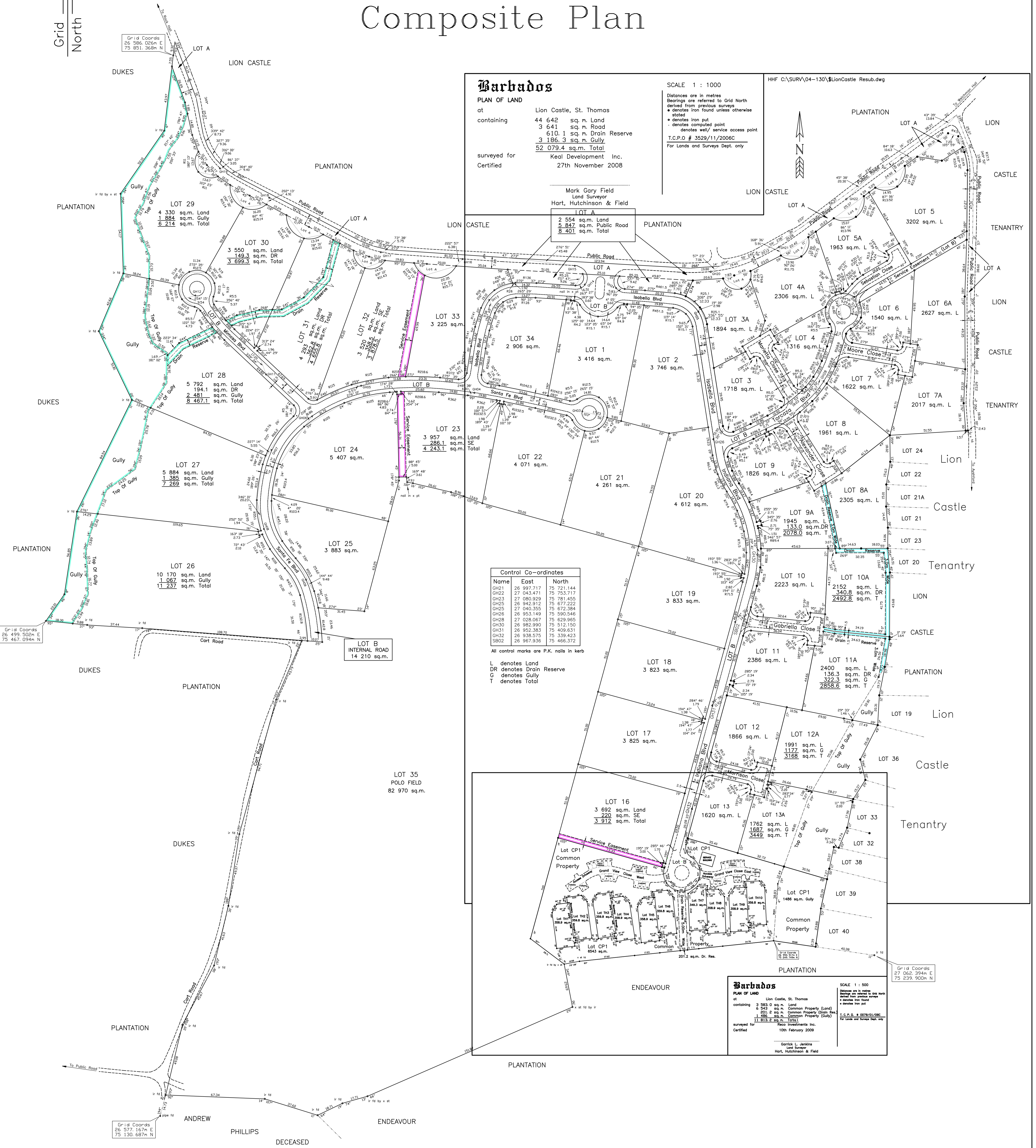


# LION CASTLE POLO ESTATE Composite Plan



**Barbados**  
**PLAN OF LAND**  
 at Lion Castle, St. Thomas  
 containing 44 642 sq. m. Land  
 3 641 sq. m. Road  
 610.1 sq. m. Drain Reserve  
 3 186.3 sq. m. Gully  
 52 079.4 sq. m. Total  
 surveyed for Keal Development Inc.  
 Certified 27th November 2008

SCALE 1 : 1000  
 Distances are in metres  
 Bearings are referred to Grid North  
 derived from previous surveys  
 \* denotes iron put  
 • denotes computed point  
 - denotes self service access point  
 T.C.P.O # 3529/11/2006C  
 For Lands and Surveys Dept. only

**Control Co-ordinates**

Name	East	North
GH21	26 897.717	75 721.144
GH22	27 043.471	75 753.717
GH23	27 080.929	75 781.455
GH25	26 942.912	75 672.222
GH26	27 040.355	75 672.384
GH26	26 953.149	75 590.546
GH26	26 928.087	75 629.965
GH30	26 982.990	75 512.150
GH31	26 952.383	75 409.631
GH32	26 938.575	75 339.423
GH32	26 967.936	75 466.372

All control marks are P.K. nails in kerb  
 L denotes Land  
 DR denotes Drain Reserve  
 G denotes Gully  
 T denotes Total

**Barbados**  
**PLAN OF LAND**  
 at Lion Castle, St. Thomas  
 containing 2 305.0 sq. m. Land  
 6 341.0 sq. m. Common Property (Land)  
 282.0 sq. m. Common Property (Gully)  
 11 813.2 sq. m. Total  
 surveyed for Keal Development Inc.  
 Certified 10th February 2009

**Barbados**  
**PLAN OF LAND**  
 at Lion Castle Polo Estate, St. Thomas  
 containing 236 623 sq. m. Land  
 14 210 sq. m. Internal Road  
 5 847 sq. m. Public Road  
 11 489.3 sq. m. Gully  
 825.1 sq. m. Drain Reserve  
 1 256.1 sq. m. Service Easement  
 270 293.5 sq. m. Total  
 surveyed for Keal Development Inc.  
 Certified 14th May 2004

SCALE 1:1000  
 Distances are in metres  
 Bearings are referred to Grid North  
 derived from DLS Control  
 Notes:  
 \* Denotes iron put unless otherwise stated  
 - Denotes computed point  
 SE - Service Easement  
 DR - Drain Reserve  
 For Lands and Surveys Dept. only

**Control List**

Name	East(m)	North(m)	Description
1	GH21	26896.060	75609.417 PK KERB
2	GH24	26790.636	75622.094 PK KERB
3	GH25	26713.740	75626.002 PK KERB
4	GH26	26680.434	75606.059 PK KERB
5	GH27	26652.863	75583.198 PK KERB
6	GH28	26647.667	75529.557 PK KERB
7	GH29	26676.322	75495.089 PK KERB
8	GH10	26683.784	75430.338 PK KERB
9	GH11	26649.126	75334.559 PK KERB
10	GH12	26601.116	75688.211 PK KERB
11	GH13	26603.784	75685.123 PK KERB
12	GH14	26665.778	75695.707 PK KERB
13	GH15	26658.893	75706.414 PK KERB
14	GH16	26782.616	75712.841 PK KERB
15	GH17	26727.070	75717.590 PK KERB
16	GH18	26651.309	75754.615 PK KERB
17	GH19	26617.765	75774.540 PK KERB
18	GH20	26601.283	75704.392 PK KERB
19	GH21	26697.717	75721.144 PK KERB
20	GH22	27043.471	75753.717 PK KERB
21	GH23	27080.929	75781.455 PK KERB
22	GH24	26686.933	75603.060 PK KERB
23	GH25	26642.912	75672.222 PK KERB
24	GH26	26653.149	75590.546 PK KERB
25	GH27	26698.432	75602.784 PK KERB
26	GH28	27028.087	75629.965 PK KERB
27	GH29	27040.355	75672.384 PK KERB
28	GH30	26682.990	75512.150 PK KERB
29	GH31	26652.383	75409.631 PK KERB
30	GH32	26638.575	75339.423 PK KERB
31	GH33	26620.176	75282.125 PK KERB
32	GH34	27108.664	75800.752 PK KERB