

# BUTTSBURY COURT

*POLO RIDGE, ST. JAMES*

*“The most stylish  
interior in Barbados”*

This exquisite home features four bedrooms & five bathrooms with an interior of +5,700 ft<sup>2</sup>, set in 28,100 ft<sup>2</sup> of beautifully manicured grounds on the exclusive Holders Polo Ridge in St James.







Tailored to the desires of those looking to discover the allure of tropical living enhanced by the very finest quality, Buttsbury Court is the first development delivered in Barbados by Bonham & Bonham; London architects, designers and interiors manufacturers.

With the golden sands of Paynes Bay just a walk away and Holetown, the vibrant heart of the Platinum West Coast no more than 10 minutes by car, Buttsbury Court is a private oasis of calm, just a stones throw from the very best Barbados has to offer.







The main house is beautifully presented featuring a stunning open plan living space that seamlessly blends the indoor and outdoor spaces. The main house boasts three ensuite Super King bedrooms all with walk in dressing rooms while a separate Cottage offers the perfect space for guests.





Finished to the highest standard by designers Bonham & Bonham London, with bespoke cabinetry from its English workshop and furniture and fittings curated by its London based design team, Buttsbury Court is unique to Barbados.

This exceptional home showcases its unparalleled design talent and quality craftsmanship in the Caribbean for the first time.









Inspired by the essence of Caribbean elegance, Buttsbury Court fuses contemporary designs and bespoke craftsmanship while remaining true to the ideals of island living.

The kitchen features bespoke Corian work surfaces with cabinets made in England by Bonham & Bonham with a bright and inviting feel, it flows through the beautifully daylit Dining Room into the Sun Lounge and out onto the covered dining terrace, where you can enjoy dinner with family and friends.













The Cottage Terrace opens into the Super King bedroom and walk-in dressing room adjacent to his and her bathrooms on one side and a kitchenette on the other.









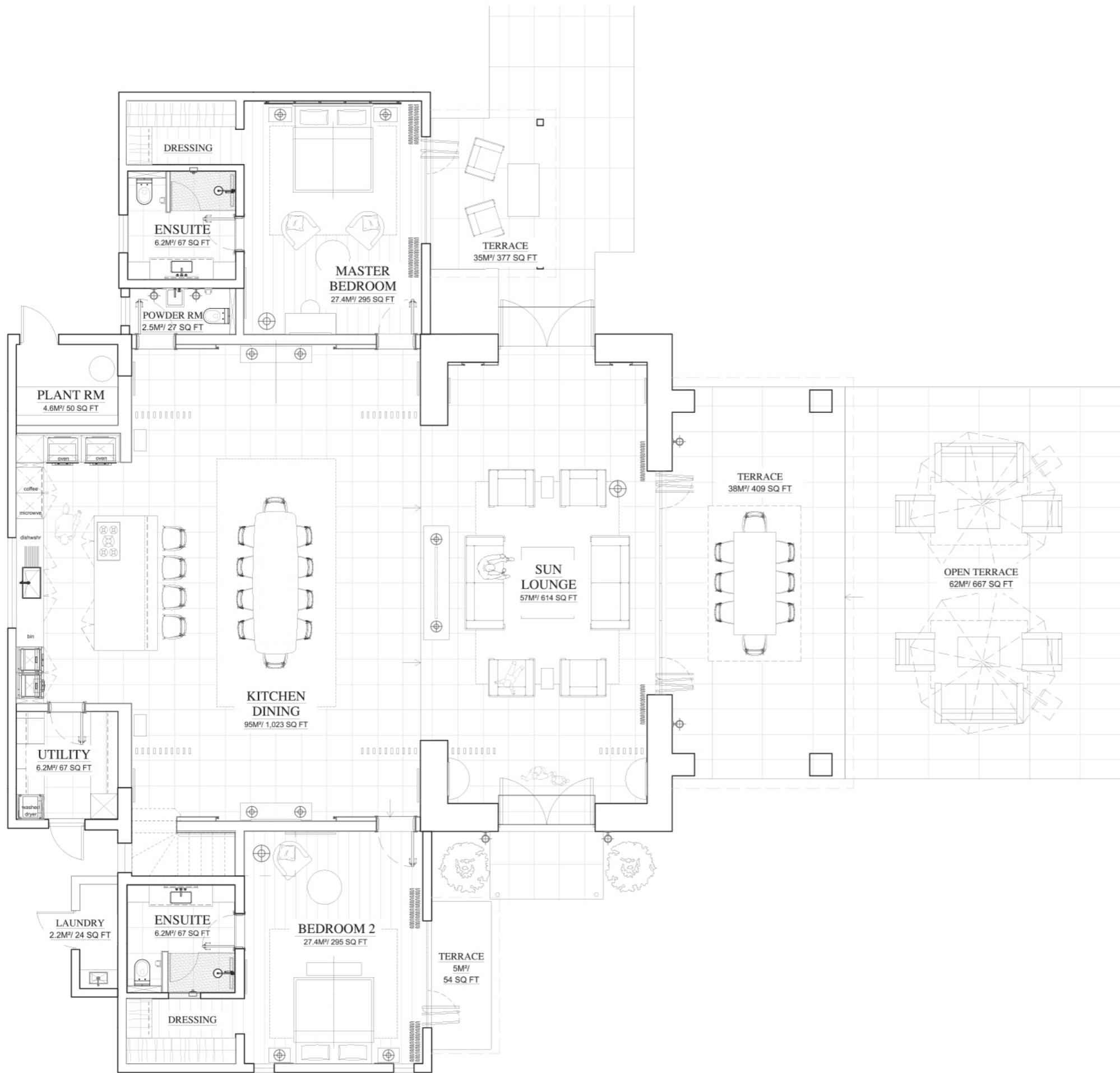
Bonham & Bonham integrate architecture, interior and construction services to deliver luxury developments and interiors for clients around the world. This home brings its exclusive luxury services to Barbados for the first time.



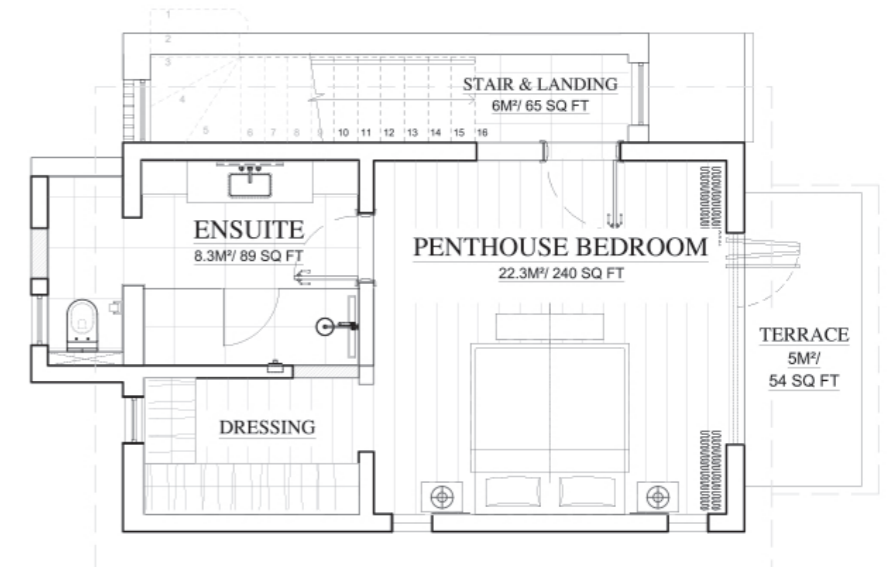


BUTTSBURY COURT

POOL VIEWS TOWARDS THE POLO FIELD



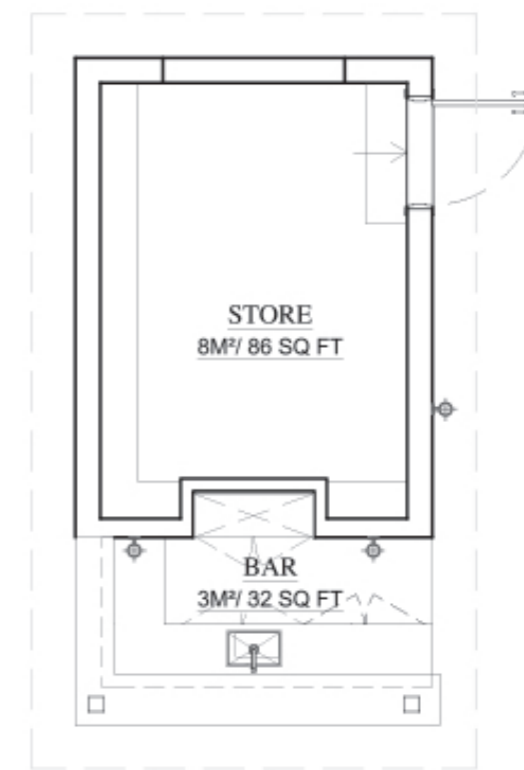
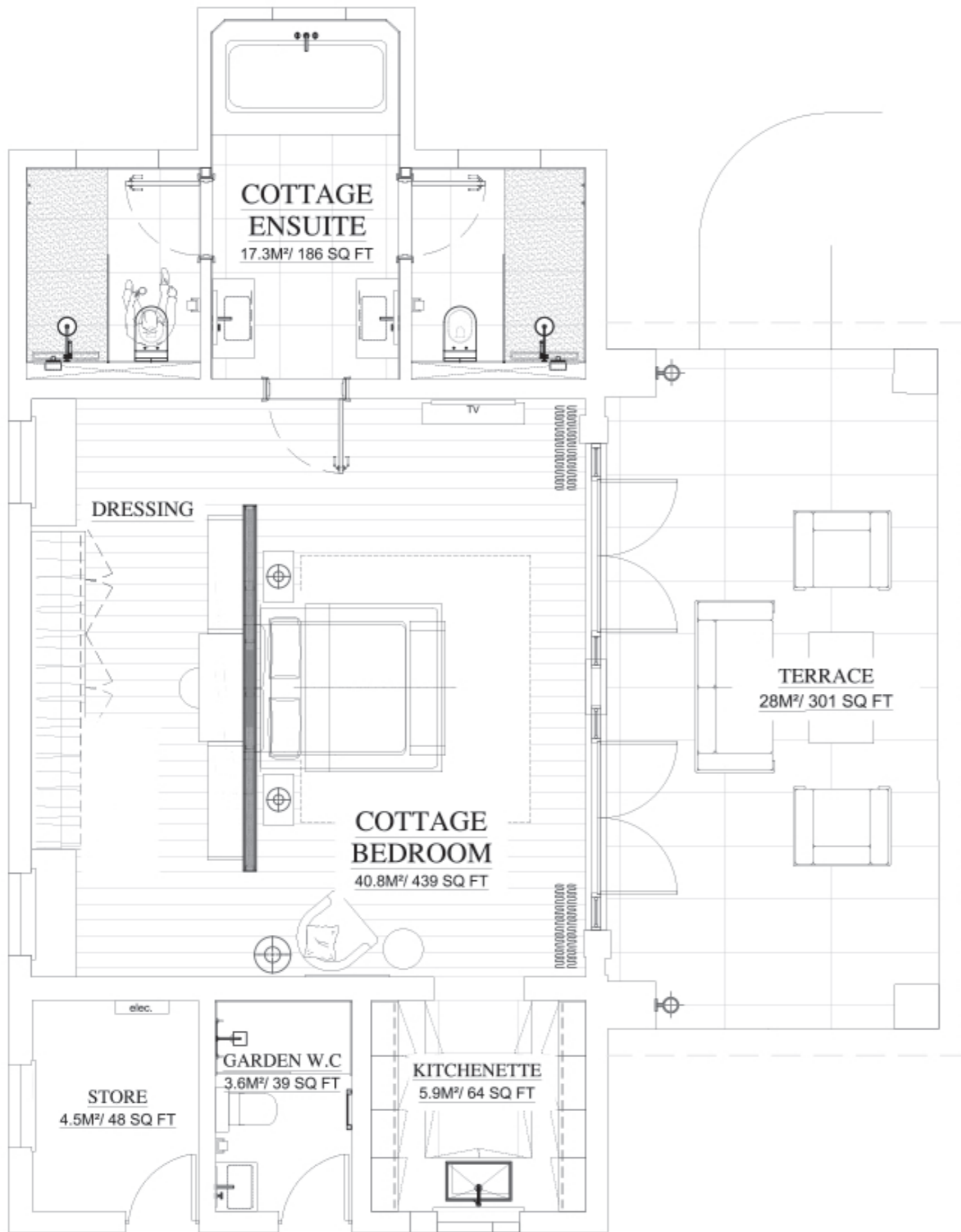
GROUND FLOOR



PENTHOUSE

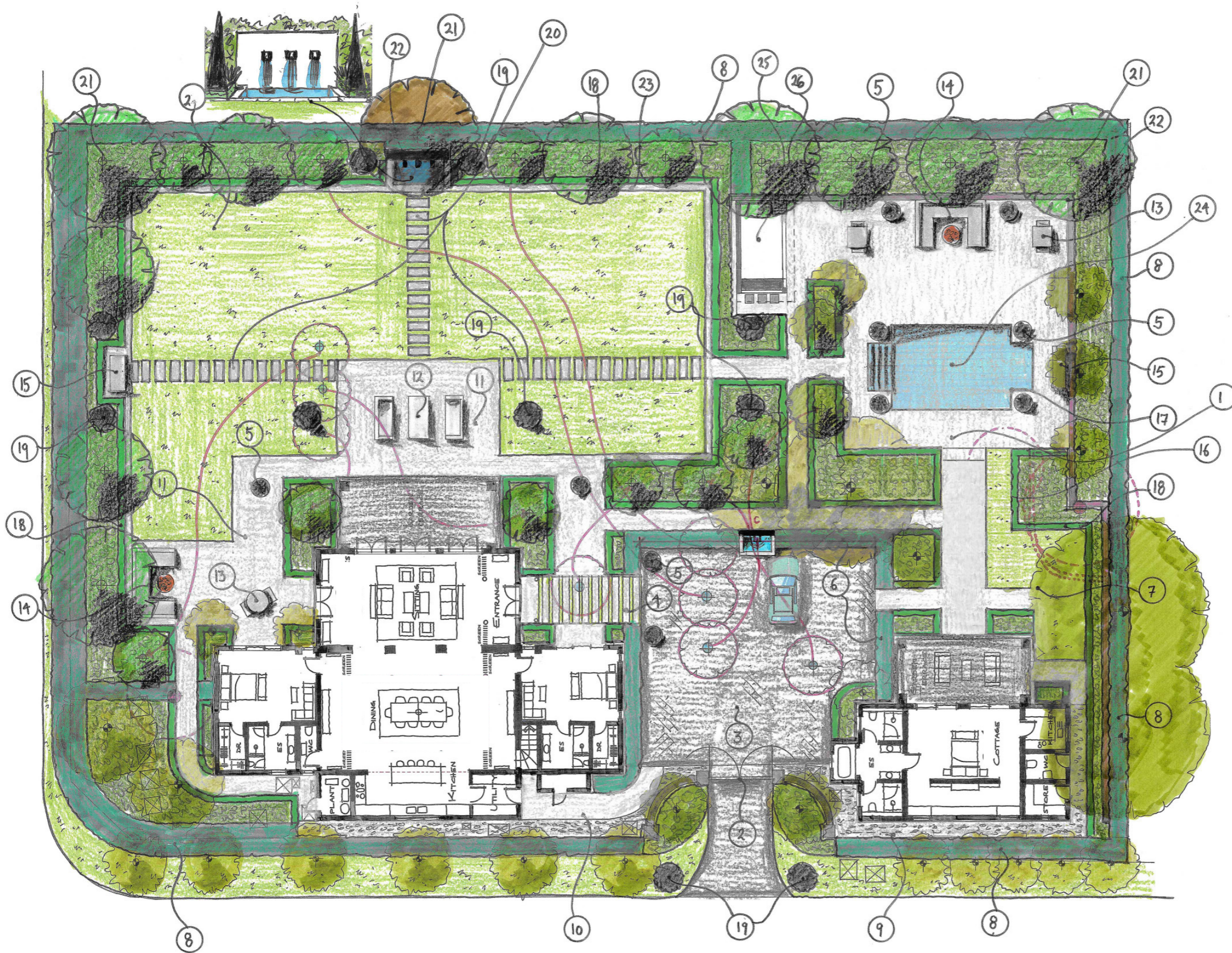
Total internal area: 5,701 ft<sup>2</sup>  
 Total external area: 28,100 ft<sup>2</sup>





POOL BAR

THE COTTAGE



**KEY**

- 1 Main pool terrace
- 2 Entrance gates
- 3 Driveway
- 4 Feature paving and walkway to main entrance
- 5 Feature plants & trees
- 6 High foliage
- 7 Lawn areas
- 8 High boundary planting
- 9 Loose pebble pathways
- 10 Loose pebble pathways
- 11 Main terrace lounge, special finish pathways
- 12 Large low drinks table and external lounge sofas
- 13 Small bistro style table and chairs
- 14 Lounge area
- 15 Focal feature
- 16 Special finish paved terrace
- 17 Contemporary style terrace
- 18 Foliage
- 19 Foliage
- 20 Special finish pathways
- 21 Palms
- 22 Boundary fence
- 24 Pool
- 25 Pool bar
- 26 BBQ optional

LANDSCAPE PLAN

## SPECIFICATION

### Furnishings

Stylish and high quality furnishings throughout  
Acoustic fabric panels in Lounge and Dining Room  
by GP & J Baker of London

### Flooring

Timber floor - Engineered European Oak in white matt lacquer  
Tiles - Minoli Italian Porcelain indoor 600 x 600mm, matching outdoor  
600 x 1200mm

### Wallcoverings

Dining room & Bedroom Wallcoverings from Elitis, Paris

### Kitchen & Utility

All cabinets made in England by Bonham & Bonham with  
bespoke Corian work surfaces

### Kitchen Appliances

KitchenAid 48" side-by-side US style refrigerator  
KitchenAid 24" 5 zone induction cooktop  
Two KitchenAid 30" ovens  
Integrated KitchenAid dishwasher  
Integrated KitchenAid microwave  
Integrated Smeg coffee machine  
Integrated 21 bottle wine cooler  
25lbs capacity ice machine  
GE 24" front load washer  
GE 24" electric dryer  
Sink waste food disposal  
Instant hot water dispenser with 3gl tank  
Grohe kitchen tap with 360 swing and dual spray/stream function  
30" stainless steel kitchen basin

### Bathrooms

Bespoke floating vanity cabinets from Rilxua Italia  
Hansgrohe vanity taps  
Illuminated Bathroom mirror with integrated de-misters  
Shaver sockets  
Dual outlet showers with Grohe thermostatic mixer and diverter  
Grohe 160mm Rainshower heads  
Grohe hand shower with 59" hose  
Wall mounted Duravit W/Cs with concealed cisterns

### Cottage Kitchen Appliances

24" KitchenAid undercounter fridge  
30" Samsung microwave oven  
30" stainless steel kitchen basin  
Grohe Kitchen tap with 360 swing and dual and spray/stream function

### Master Bathroom

Caribbean Quartzite feature wall

### Cottage Bathroom

1750mm double ended bath tub  
Hansgrohe Waterfall bath tap

### Decorative Lighting

Dining Room & Lounge Strada Starburst chandeliers  
Kitchen island Arturo Alvarez Ballet pendant light cluster  
Master & Bedroom 2 ceiling chandeliers  
Outdoor pendant lights and wall sconce lamps in terrace areas  
Multi-colour programmable & music responsive pool lighting system

### HVAC

Open plan Living Area features ducted air conditioning  
All Bedrooms are air conditioned  
60" Coastal Smart Ceiling fans are fitted throughout  
Pressurised water system and power shower up to 5 bar

### Dressing Rooms

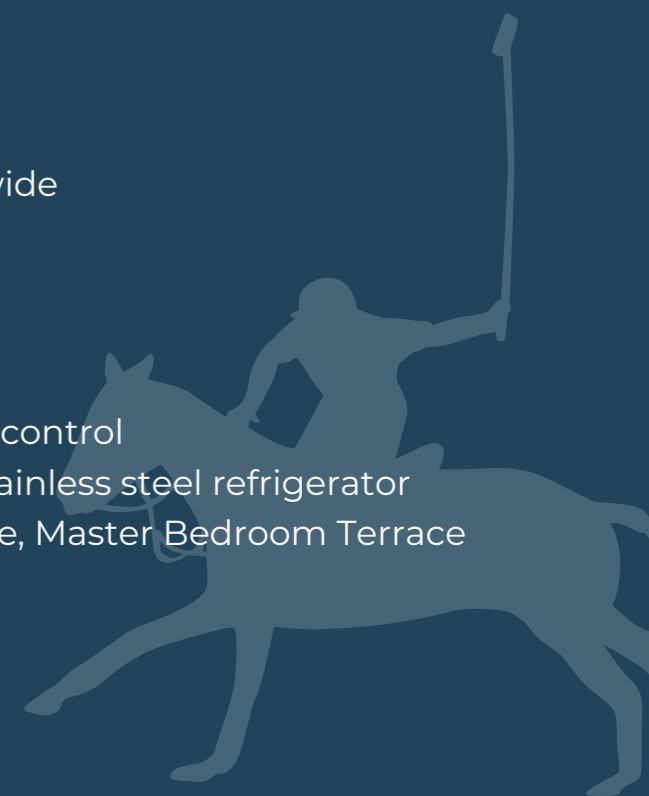
All Dressing Room cabinetry made in England by  
Bonham & Bonham

### Data & Media

App based security cameras installed for viewing worldwide  
Ethernet data points in each room  
TV Coaxial in Lounge and each bedroom

### Garden & External

Fully automated security gates with intercom and video control  
Pool Bar with Bar cabinets, undercounter storage and stainless steel refrigerator  
Furnished Pool, Pool Bar, Lounge Terrace, Garden Terrace, Master Bedroom Terrace  
and Cottage Terrace  
Fully automated garden irrigation system







## LOCATION

Buttsbury Court is located on the North end run-off of the Holders polo field, with uninterrupted views across the pitch. The Holders field has been the home of The Barbados Polo Club since 1965.



*View of the pony lines from Buttsbury Court*

## LOCATION

Situated on Barbados' Platinum West Coast, renowned for its golden sands and clear warm waters, the property is a 3 minute drive or 15 minute walk to Paynes Bay and a 10 minute drive to the West Coast centre of Holetown.



*Paynes Bay Beach*

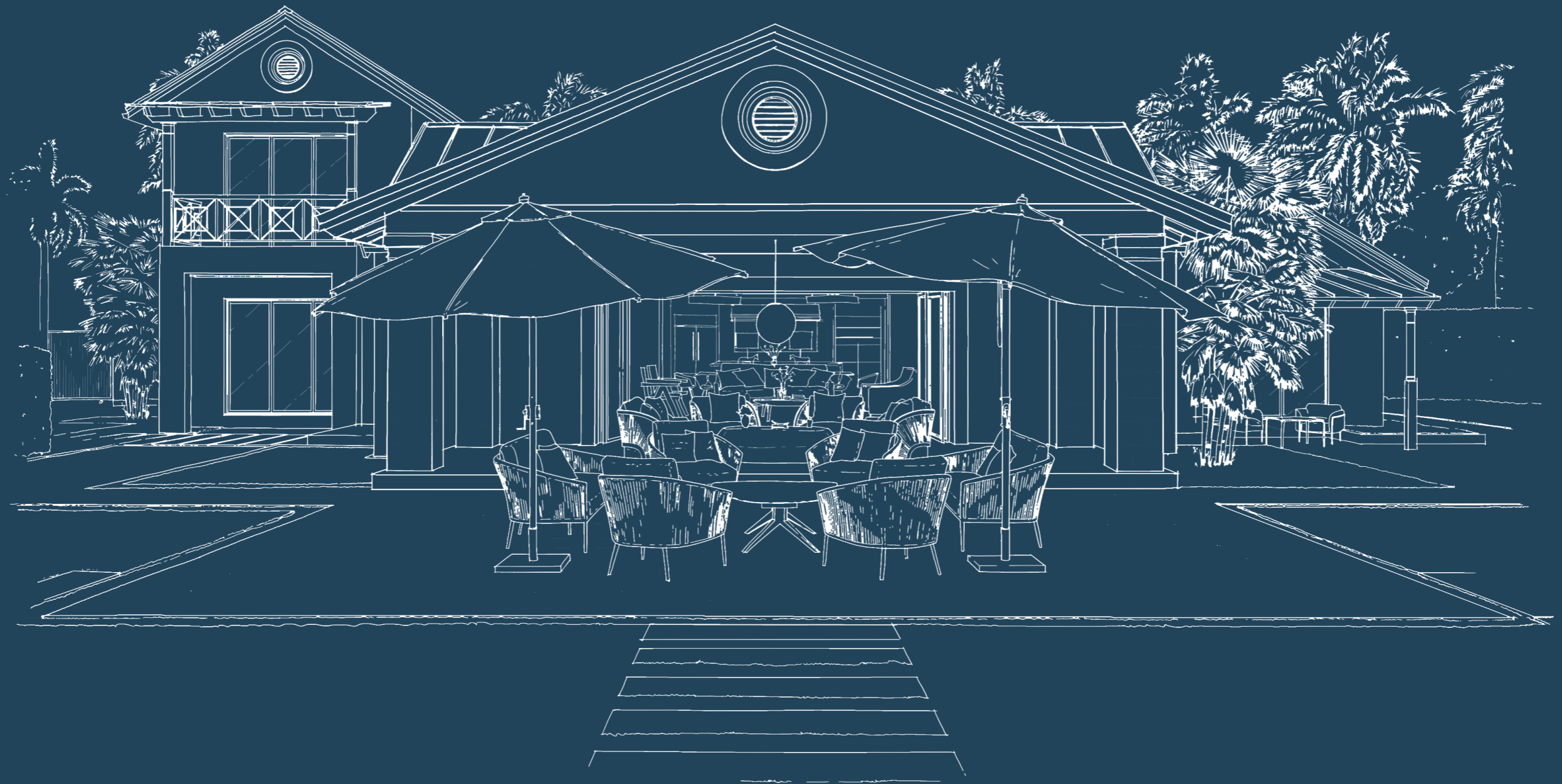
## ABOUT BONHAM & BONHAM

For over 75 years Bonham & Bonham has delivered top class design and has earned a reputation as the go-to choice for private clients demanding the highest quality of bespoke design and interiors. Its clients benefit from the integration of an expert design team with in-house manufacturing facilities and experienced interior fit-out and site works teams.

From the bespoke cabinetry for which Bonham & Bonham is well known, to custom chandeliers, feature lighting, rugs and textiles, the business delivers truly unique in-house craftsmanship for clients seeking to realise their own world class luxury property.

Every Bonham & Bonham is led by senior designers and their regular presence on the site ensures that the concepts created for clients are fully realised. With a single point of contact, clients can rest assured that their ambitious vision is not only fully understood, but expertly brought to life with highly personal service throughout.





BONHAM & BONHAM

LONDON

+44 208 123 9600

[WWW.BONHAMANDBONHAM.COM](http://WWW.BONHAMANDBONHAM.COM)